

→ references 2019

ENERGY PLANTS

ENERGY PLANTS

Location

Egypt, Algeria

Contractor

Orascom Construction Group

Scope of work

Design and fabrication of steel structures

Period of execution

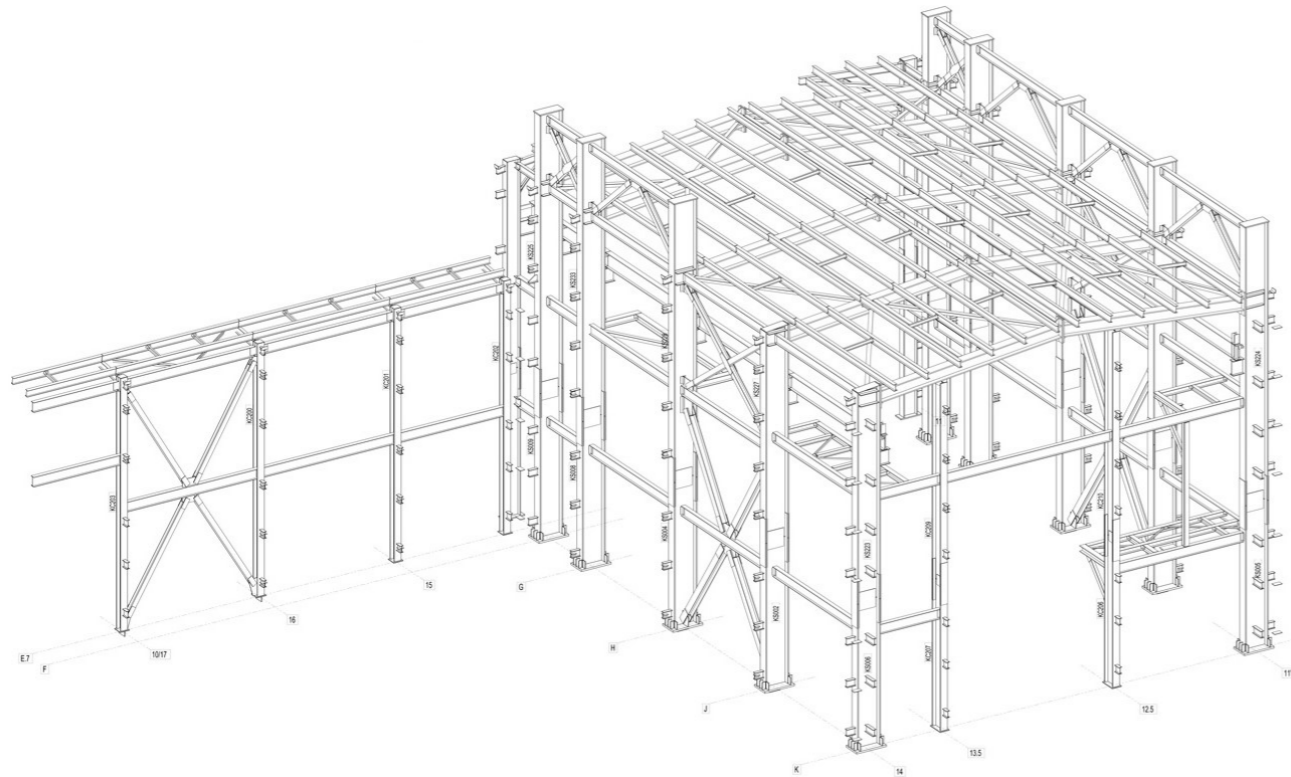
2015-2017

Weight

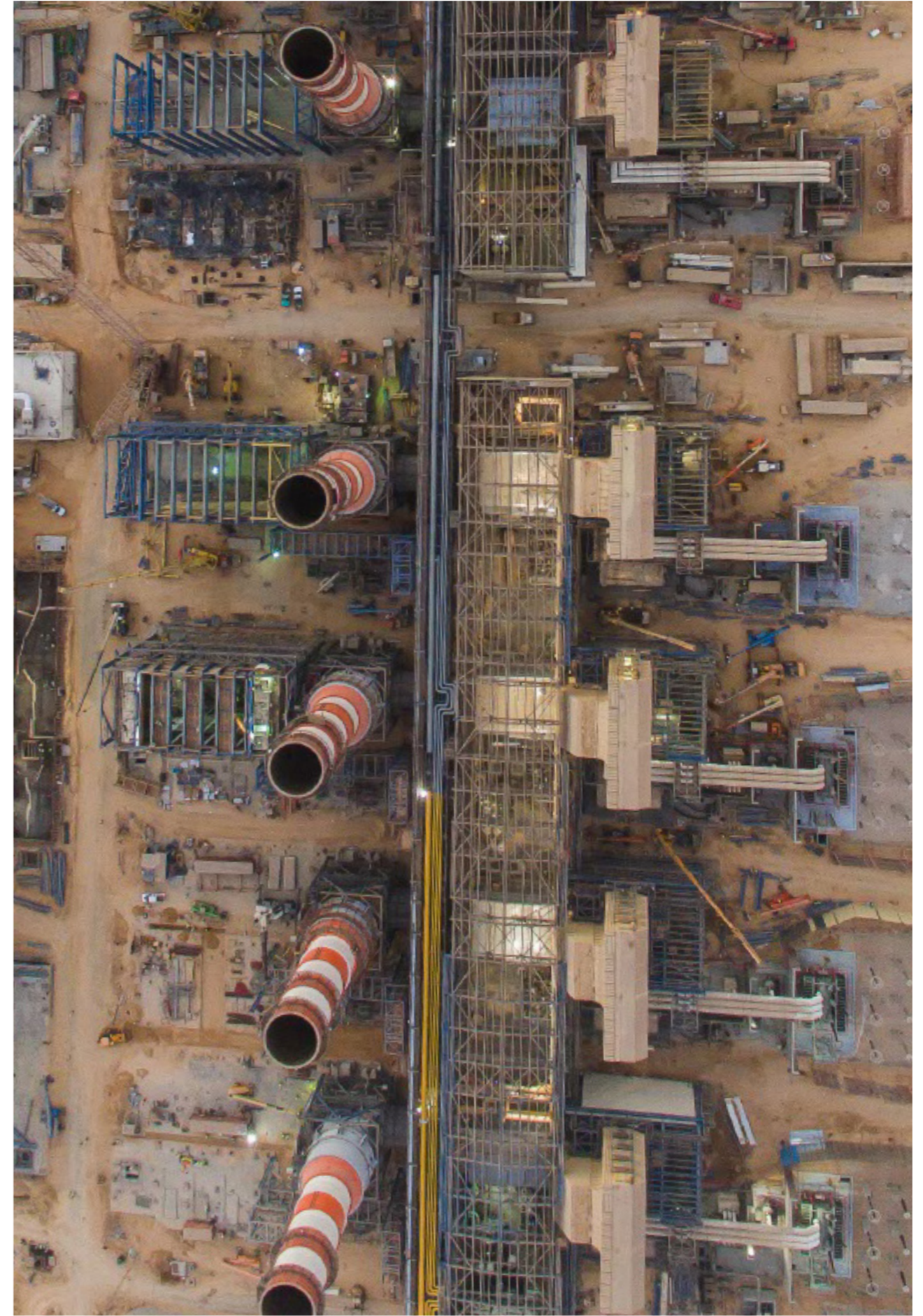
27.300 tons

The establishment of an important continuous partnership for the design and supply of steel structures for industrial buildings, located in the North of Africa, has brought to a production of more than 27.000 tons.

The growing population and economy in the Northern regions of Africa has required to upgrade the energy distribution system to nurture industrial activities and satisfy domestic requirements. Out of the several plants. The biggest one consists in the supply of more than 10.400 tons of steel for the construction of the New Capital power plant: a gas-fired combined cycle power plant complex where the gas burns into steam creating energy, optimizing the energy efficiency by 50 percent. With 4800 MW power capacity, it sets to supply around 15 million people with electricity, supporting the development of the region.









Ideas
shape
the
World

Maeg Costruzioni S.p.A.
Via Toniolo 40
31028, Vazzola (TV) - Italy
+39 0438 441558
www.maegspa.com